



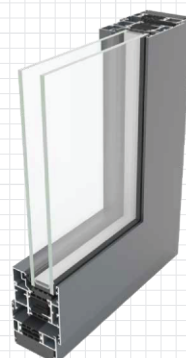
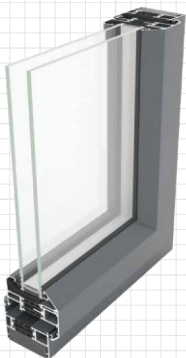
Aluminium 58BW Casement HI Window



Built to the highest UK standards, the 58BW Window System delivers a high performance and cost-effective solution with impressively narrow profiles. Equally at home on residential and commercial projects, the system is available in a number of formats including Top Hung, Side Hung and French Casement.

The system's clean lines and advanced functionality meet the demands of almost every modern building construction. Its competitive pricing also makes it a highly popular choice with specifiers both in the UK and around the globe. In addition the window is tested to PAS24.

The 58BW also holds a Green Guide 'A' rating.



DESIGN FEATURES

- › Tested to PAS 24
- › Integrated deep head profiles for ease of trickle ventilation
- › Unique polyamide thermal break design to improve thermal performance
- › Casement system sightlines to match the Tilt-Before-Turn window sightlines
- › Reverse rebate option for internal glazing throughout

OPTIONS

- › Available in two frame depths: 58mm or 70mm
- › Supports both open-in and open-out projects
- › Internally or externally glazed to accommodate low and high-rise projects
- › Glazing 24mm–40mm
- › Available in the following configurations: Top Hung, Side Hung, Bottom Hung, Fixed Light, Multi-light and French Casement
- › Available for Lifetime Homes (LFT)
- › Dedicated fixing straps for ease of installation
- › Designed with a Euro Groove to accommodate standard locking hardware
- › Smoke vent certification compliance to EN12101-2:2003 Annex G
- › Available in single or dual colour polyester powder coating, texture and anodised finishes

SPECIFICATION DATABASE

AWDS - 7/24 - V1.0



Aluminium 58BW Casement HI Window

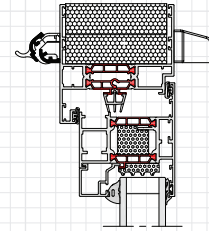
SPECIFICATIONS

| | |
|---|--------------------------|
| Performance and accreditations | 58BW CASEMENT HI |
| U-Value (Double Glazing) | 1.4 W/m ² K |
| U-Value (Triple Glazing) | 1.2 W/m ² K |
| Window Energy Rating (WER) | B - C |
| BRE Green Guide Rating | A rated |
| Air Permeability | Class 4 (600 Pa) |
| Water Tightness | Class 9a (600Pa) |
| Wind Resistance | Class E2400 (2400 Pa) |
| Security | PAS 24 |
| 3rd Party Certification Q-Mark | ✓ |
| System | |
| Depth | 58 & 70mm |
| Configurations | |
| Opening | Open-Out |
| Top Hung | ✓ |
| Side Hung | ✓ |
| Bottom Hung | ✓ |
| Tilt & Turn | - |
| Fixed Light | ✓ |
| Multi-Light | ✓ |
| French Casement | ✓ |
| Size and weight limits | |
| Top Hung | |
| Max Size (mm) | 1750w x 2500h |
| Min. Size | 300w x 350h |
| Max Weight | 180kg |
| Side Hung | |
| Max Size (mm) | 838w x 1750h |
| Min. Size | 300w x 300h |
| Max Weight | 55kg |
| Bottom Hung | |
| Max Size (mm) | 1750h x 1750w |
| Min. Size | 350h x 350w |
| Max Weight | 45kg (5 hinges) |
| Butt Hinges (Side & Bottom Hung) | |
| Top hung (max weight) | 40 Kg |
| Side hung (max weight) | 24 Kg |
| Fixed Light | |
| Max Weight | 250kg |
| Glazing | |
| Glazing Options Internal Bead | Internal & External Bead |
| Glazing Thickness ** | 24mm - 40mm |
| System Features | |
| Single Colour | ✓ |
| Dual Colour | ✓ |
| Textured Finish | ✓ |
| Anodised Finish | ✓ |
| Multi-Point Locking | ✓ |
| Smoke Vent Compliance | ✓ |
| Sightline (Frame to Vent) | 75mm |
| Sightline (Vent to Mullion) | 89mm |
| Sightline (Fixed Light) | 43mm |

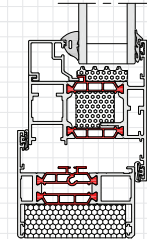
CAD CROSS SECTIONS AND THERMAL PROFILE

Additional details are available on request.

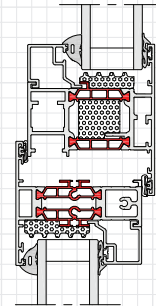
58BW CASEMENT HI HEAD



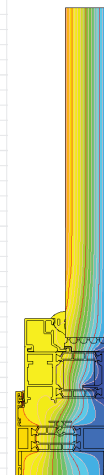
58BW CASEMENT HI LAMB



58BW CASEMENT HI MULLION



58BW CASEMENT HI THERMAL PROFILE



** Glazing thickness: Other thicknesses may be possible dependent on profile combinations specified. Fabricators should refer to AluK technical manual glazing section for details.